

The logo for Clyde Industries, featuring a stylized blue 'C' icon followed by the text 'CLYDE INDUSTRIES' in a bold, blue, sans-serif font.

**CLYDE  
INDUSTRIES**

A large industrial facility, likely a power plant or refinery, is shown at night. The scene is illuminated by warm, orange and yellow lights from the facility, contrasting with the dark blue night sky. Several tall smokestacks are visible, some with red lights at their bases. The foreground is dark, suggesting a distance from the viewer.

# **PARTS AND SERVICES**

---

Single source provider for all your needs

# PARTS AND SERVICES

Relax, we have you covered



## Your Single Source Provider

When it comes to maintaining your boiler's efficiency, Clyde Industries provides you with a full range of services from supply of spare parts, installation, commissioning, training of service personnel, up to providing consulting services for optimization and modernization of on-load boiler cleaning systems.

Clyde Industries's experience is unmatched as we have provided boiler cleaning solutions for over 60 years. We have worked with over 1400 power and recovery boiler operators throughout North America helping them achieve optimal boiler performance.

We provide a complete service covering the entire lifespan of cleaning equipment helping you streamline your procurement process. Our services are completely flexible and customized to your specific needs. Whether it be a simple part replacement order or a vendor managed inventory program, we have you covered.

## Safety First

Safety is our number one priority and we take every measure to maintain our certifications and personnel training.

All of our service consultants possess the following certifications and training:

- Transportation Workers Identification Credential (TWIC)
- DISA Certification
- MICCS/Coats Cards
- OSHA 10 Safety Trained
- Basic Plus Cards from HASC or ARSC equivalent
- NCCCO Rigging Certified Level 1 & 2

Current safety programs Clyde Industries is registered with include: ISNetwork, PICS, and Browz.

Our 3 year average EMR is 0.75, OSHA 3 year average of LWDIR is 0.00, with the TIR being 1.47, which is below the industry average of 1.8.



## Easily accessible to you

Our headquarters and main manufacturing facilities are located in Atlanta, Georgia.

Our Aftermarket Service Group's dedicated personnel will support all maintenance, repair and replacement part needs for your boiler. This highly dedicated team delivers professional and friendly assistance with a sense of urgency.

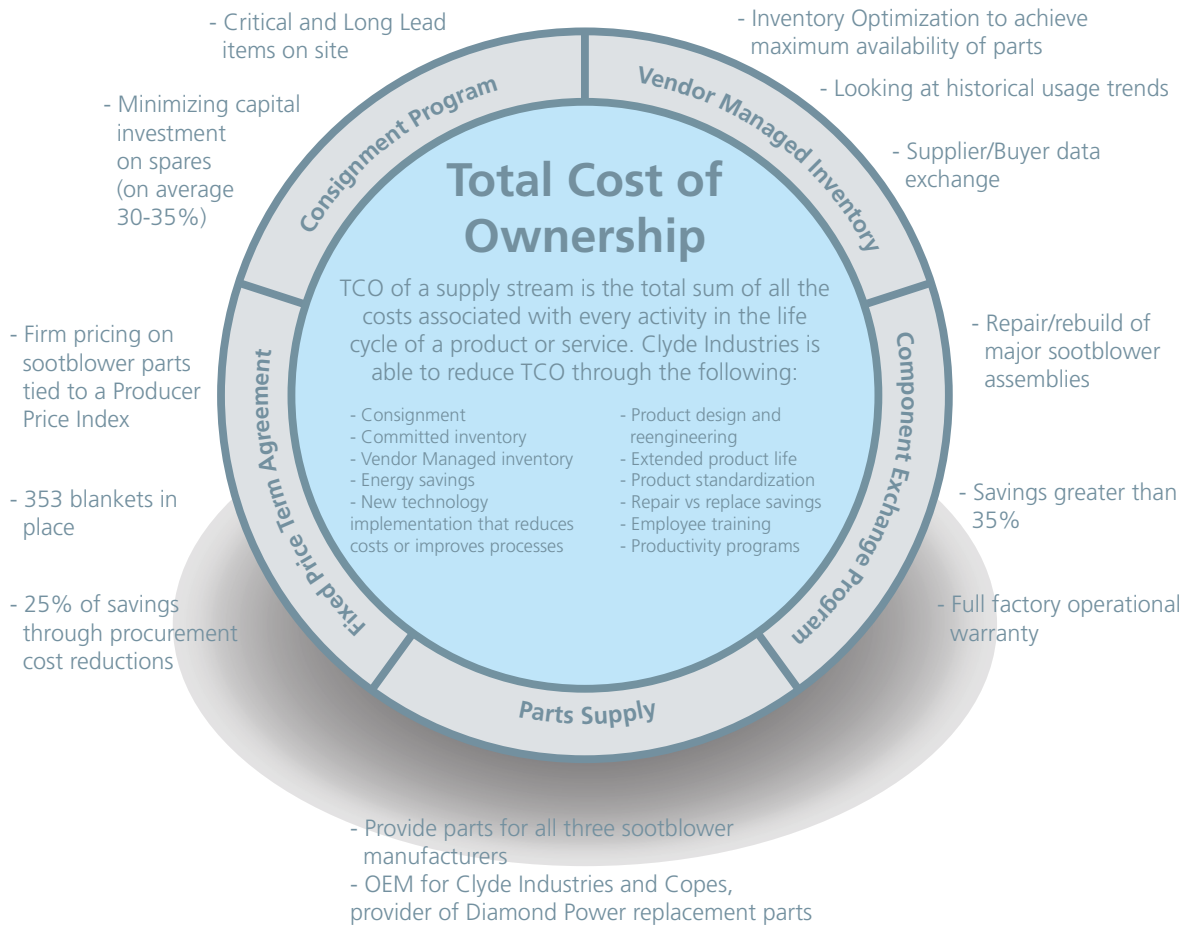
We carry an impressive inventory of on hand parts in our Atlanta headquarters. Made to order parts such as lances and feedtubes can be shipped within a short time frame in emergency situations. We maintain a toll free customer service hotline for your convenience.

You can depend on our prompt supply of spare parts in the case of unplanned shutdowns. In any case, our 24-hour hotline and comprehensive spare-parts warehouse guarantee the very best conditions to make help available – quickly.



# Support right from the start...

## Product Support Programs



### Customer Success Story

Clyde Industries recently finished a first year contract with a major pulp and paper supplier in the United States. The contract was based on Total Cost of Ownership (TCO) reduction, based on the yearly sales of sootblower parts. Clyde Industries had to achieve a TCO of at least 7.5% to renew the contract on a yearly basis.

TCO reduction includes inventory management, energy savings, new technology implementation, process improvements, product standardization, and employee training.

The supplier had all the paper mills fully engaged in the contract after seeing the benefits of working with Clyde Industries in reducing TCO. At the end of the first year Clyde Industries identified an excess of 54% of the TCO goal with the excess TCO transferring into the second year.

# ...and throughout the entire lifespan of on-load boiler cleaning equipment

## Service Programs



### Customer Success Story

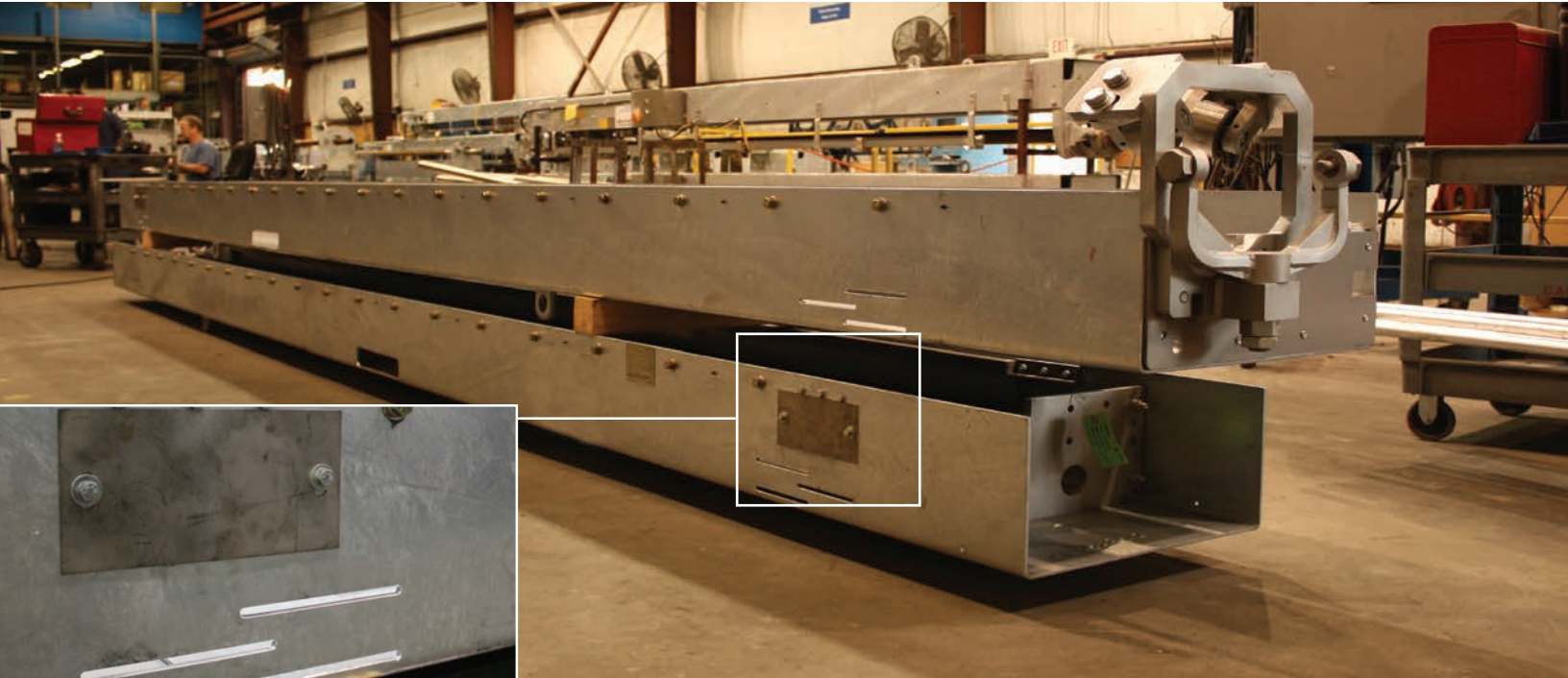
A large US utility reduced maintenance staff at their coal fired power plants resulting in the availability of their boiler cleaning systems dropping below acceptable levels to around 75%. Recognizing the impact boiler cleaning had on unit operation, they contracted Clyde Industries to perform evaluation and maintenance on their equipment. Availability is now greater than 96%. Clyde Industries now has a dedicated staff at four plants, nine units performing preventative and corrective maintenance on 954 sootblowers, water cannons, and associated equipment to insure

optimal performance. The units range in size from 500 to 800 MWs and burn Texas lignite and PRB coals.

Clyde Industries performs walk downs and develops proposals to improve equipment availability, reliability, and improve efficiency. In addition, the team sets up appropriate spare parts levels for the client to insure parts are available when needed, and also monitors boiler performance as it is related to boiler cleaning equipment, providing monthly reports to demonstrate unit performance improvements.

# ANSWERS TO YOUR IK PROBLEMS

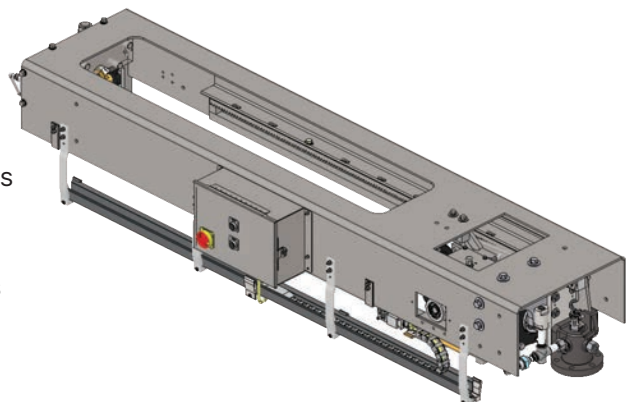
## Diamond Parts



Unlike replicators, who produce only a few high usage items, only Clyde Industries offers thousands of interchangeable sootblower parts including castings, gears, shafts, bearings, seals, gaskets, bolts, nuts, and an array of other less frequently used parts for both our own Original Equipment Manufacturer (OEM) equipment and for Diamond Power IK blowers\*.

As an OEM we offer more than simply parts; we have created real solutions to some of the most common problems encountered with the IK blowers. Our solutions cover specific problem areas on the IK blower all the way to complete sootblower replacement.

- Problem** Worn out IK525/IK545 sootblower
- Answer** Heavy duty galvanized housing
- Problem** Scratched feedtubes
- Answer** Clyde Industries Armor Glide feedtubes
- Problem** Blowing pressure adjustments
- Answer** Clyde Industries EZ Set Poppet Valves
- Problem** Expanda cable cord
- Answer** Clyde Industries P-chain conversion

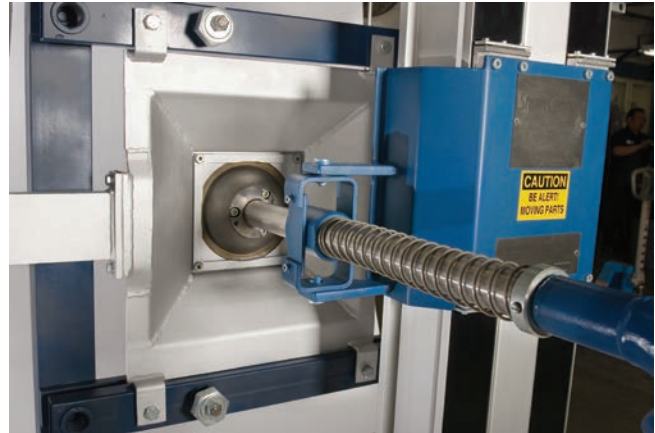


## Copes Vulcan and Clyde Industries parts readily available



### Copes Vulcan Parts

Clyde Industries acquired Copes Vulcan sootblowers in 1997 becoming the OEM supporting every single sootblower model with parts and service. Throughout time Clyde Industries has designed parts kits to support customers with assembly rebuilds with top of the line components. Clyde Industries employs a large number of engineers and customer service personnel with a vast amount of experience and knowledge in Copes Vulcan equipment.



### Clyde Industries Parts

We are the OEM for Clyde Industries sootblowers, a sootblower designed around the needs of the utility and pulp and paper industry. In all our warehouses we stock a large volume of parts to support our customers when parts are needed for outages or in other emergency situations.

Clyde Industries is also the OEM for water cannon cleaning equipment, supporting every water cannon model with parts and service. We also carry a large volume of parts from Germany critical to the continuous operation of the water cannons.





- ★ Headquarters & Manufacturing Facility
- Manufacturing Facility

- Office Location
- Sourcing Subsidiary

To learn more, contact  
Clyde Industries Sales at **770-557-3600**  
or email [info@clyde-industries.com](mailto:info@clyde-industries.com).



Clyde Industries Inc.  
4015 Presidential Parkway | Atlanta | GA | 30340  
+1 800 241 5996 | [clyde-industries.com](http://clyde-industries.com)

COMPANY WITH  
QUALITY SYSTEM  
CERTIFIED BY DNV GL  
= ISO 9001 =